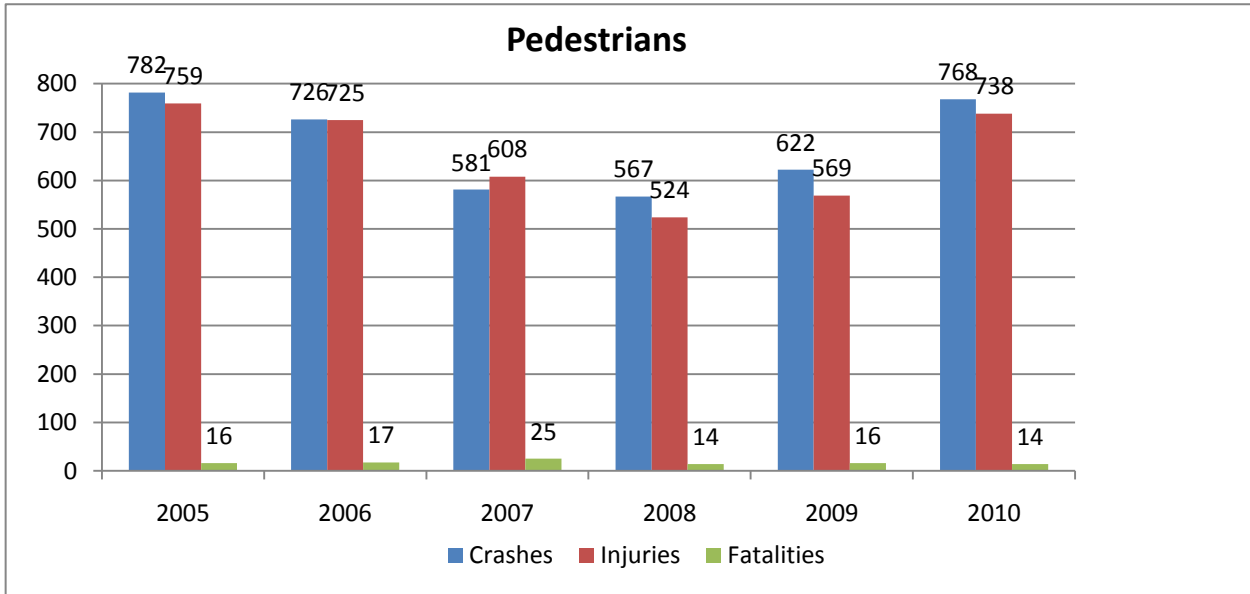
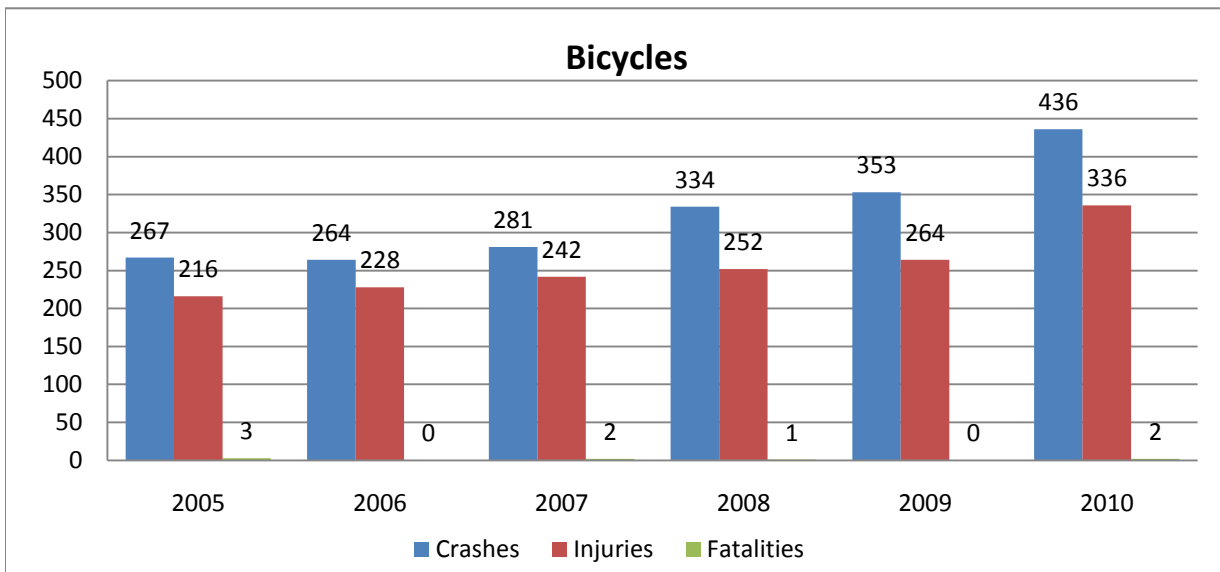


## DC Pedestrian and Bicycle Crash Data 2005-2010

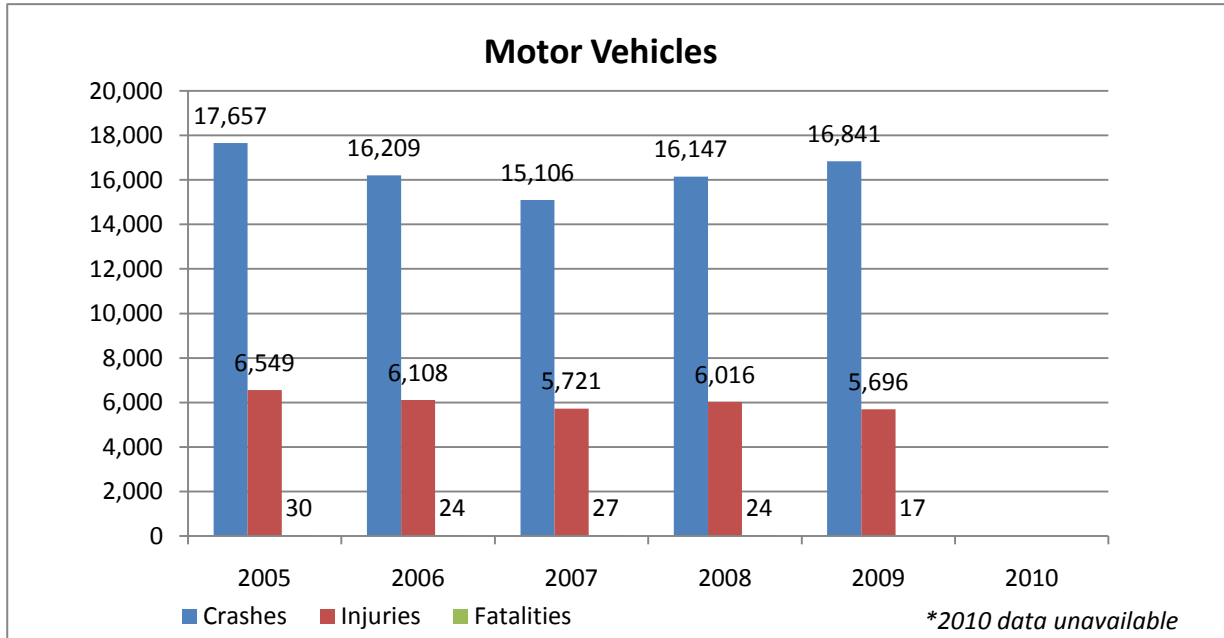


	2005	2006	2007	2008	2009	2010
<b>Crashes</b>	782	726	581	567	622	768
<b>Injuries</b>	759	725	608	524	569	738
<b>Fatalities</b>	16	17	25	14	16	14

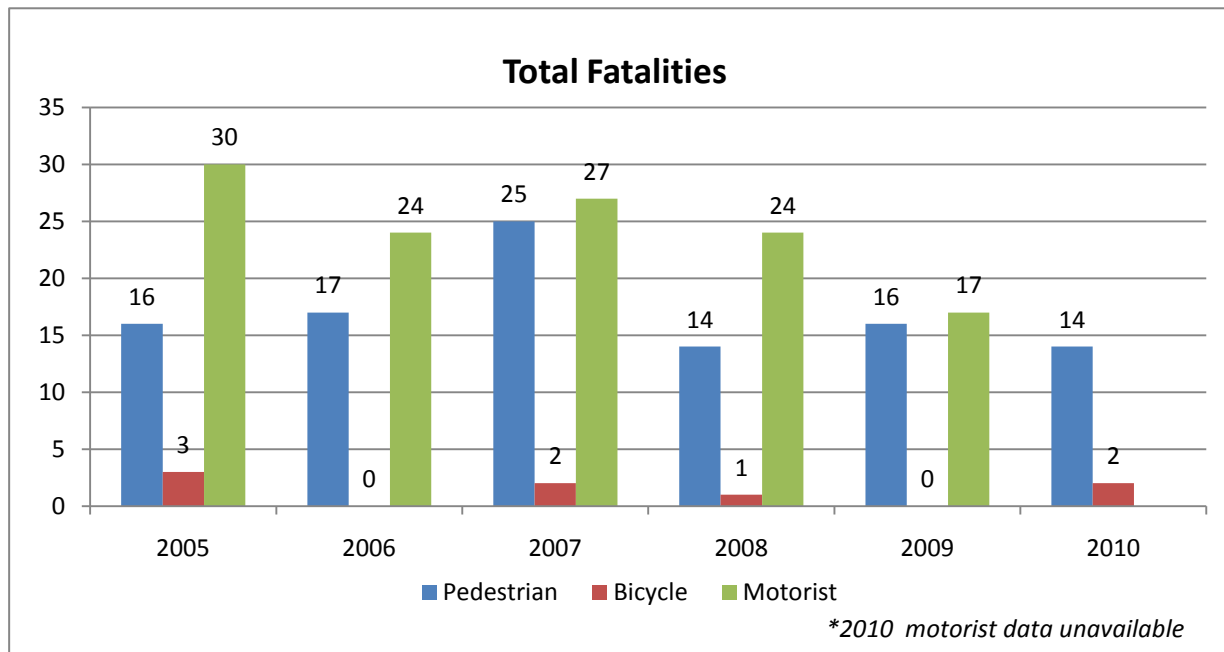


	2005	2006	2007	2008	2009	2010
<b>Crashes</b>	267	264	281	334	353	436
<b>Injuries</b>	216	228	242	252	264	336
<b>Fatalities</b>	3	0	2	1	0	2

## DC Pedestrian and Bicycle Crash Data 2005-2010

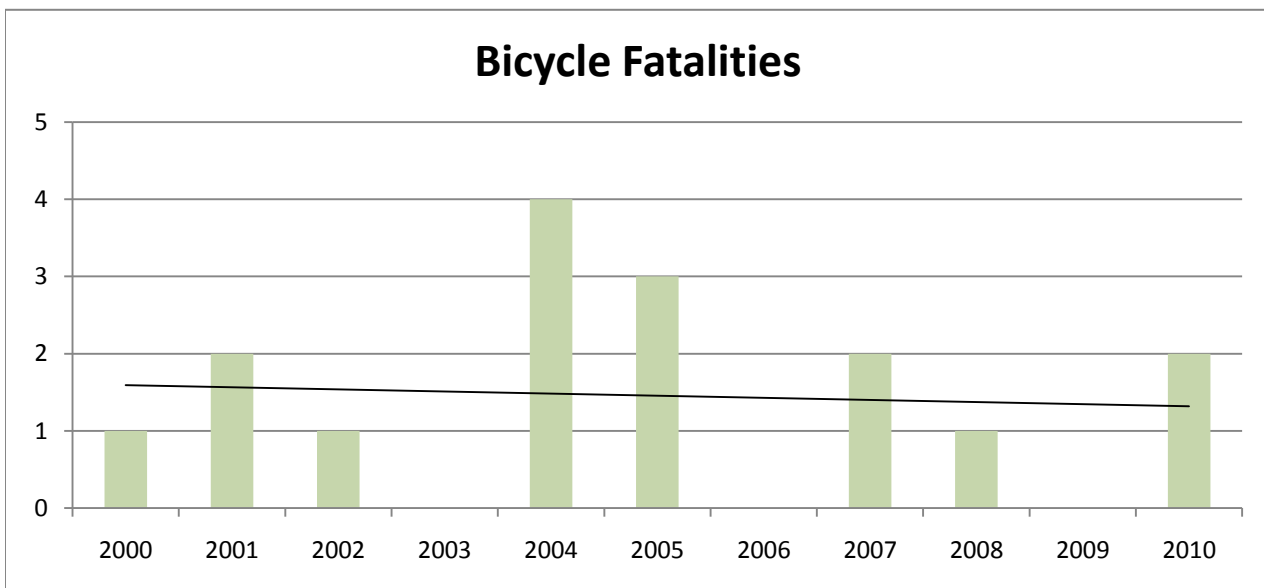
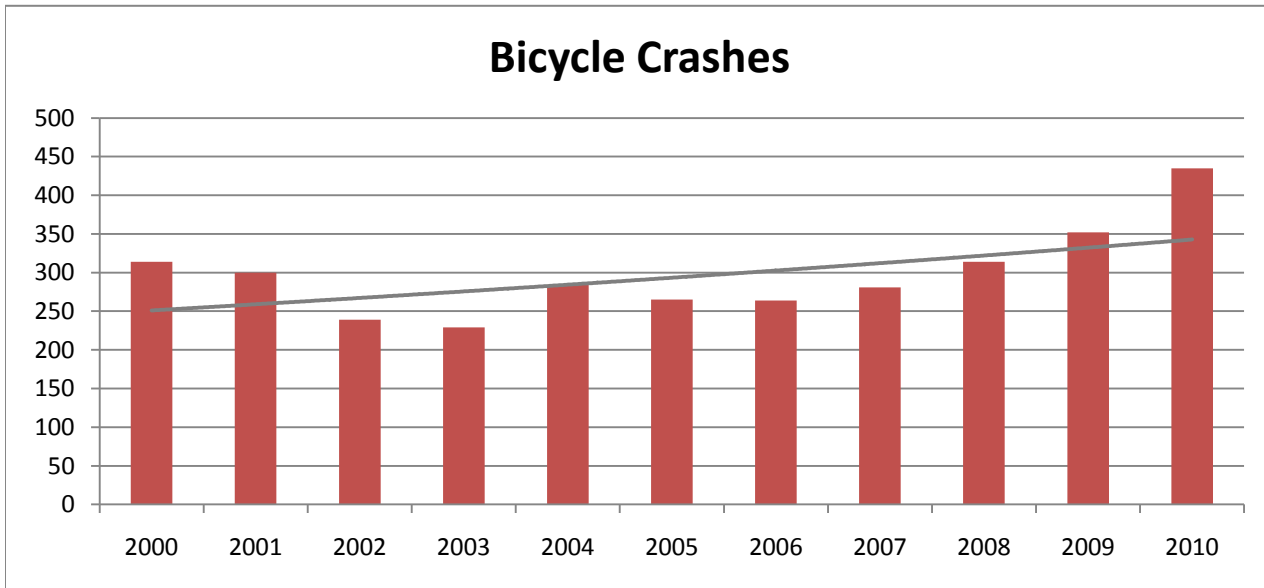


	2005	2006	2007	2008	2009	2010
<b>Crashes</b>	17,657	16,209	15,106	16,147	16,841	
<b>Injuries</b>	6,549	6,108	5,721	6,016	5,696	
<b>Fatalities</b>	30	24	27	24	17	

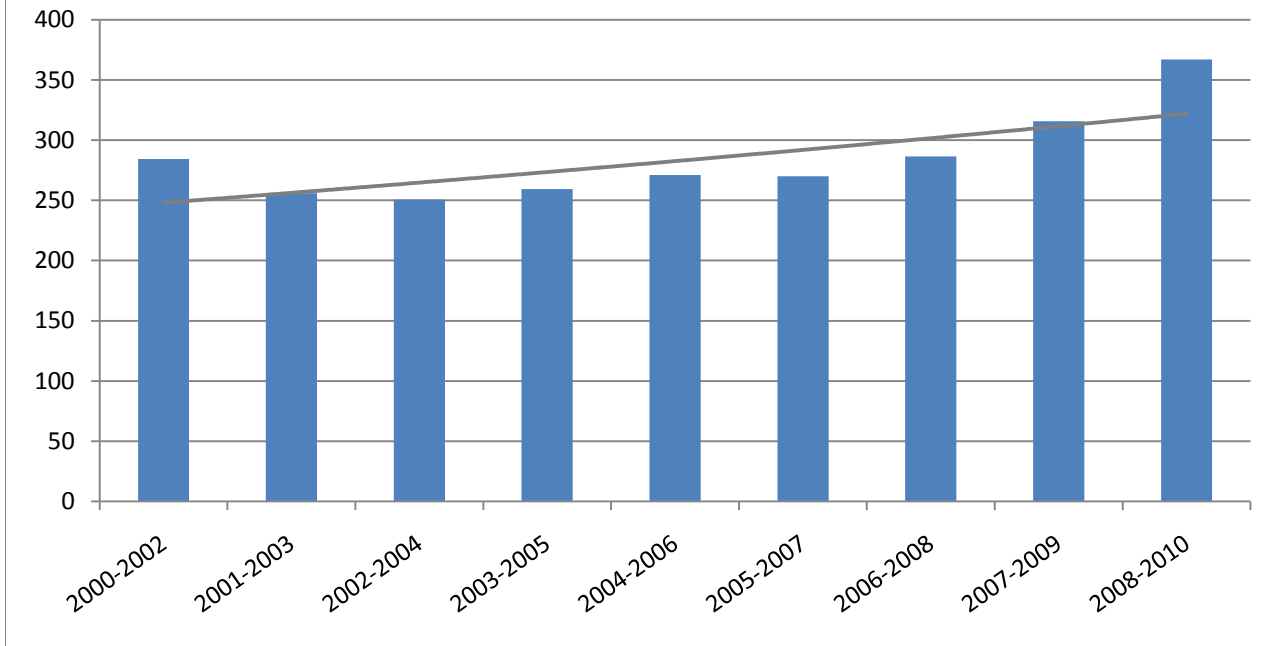


	2005	2006	2007	2008	2009	2010
<b>Pedestrian</b>	16	17	25	14	16	14
<b>Bicycle</b>	3	0	2	1	0	2
<b>Motorist</b>	30	24	27	24	17	

Year	2000	2001	2002	2003	2004	2005	2006
Crashes	314	300	239	229	284	265	264
Fatalities	1	2	1	0	4	3	0



## Bicycle Crashes - 3 year rolling average



### Three Year Rolling Averages

Year	2000-2002	2001-2003	2002-2004	2003-2005	2004-2006	2005-2007	2006-2008
Crashes	284.33	256.00	250.67	259.33	271.00	270.00	286.33

<b>2007</b>	<b>2008</b>	<b>2009</b>	<b>2010</b>
281	314	352	435
2	1	0	2

<b>2007-2009</b>	<b>2008-2010</b>
315.67	367.00